

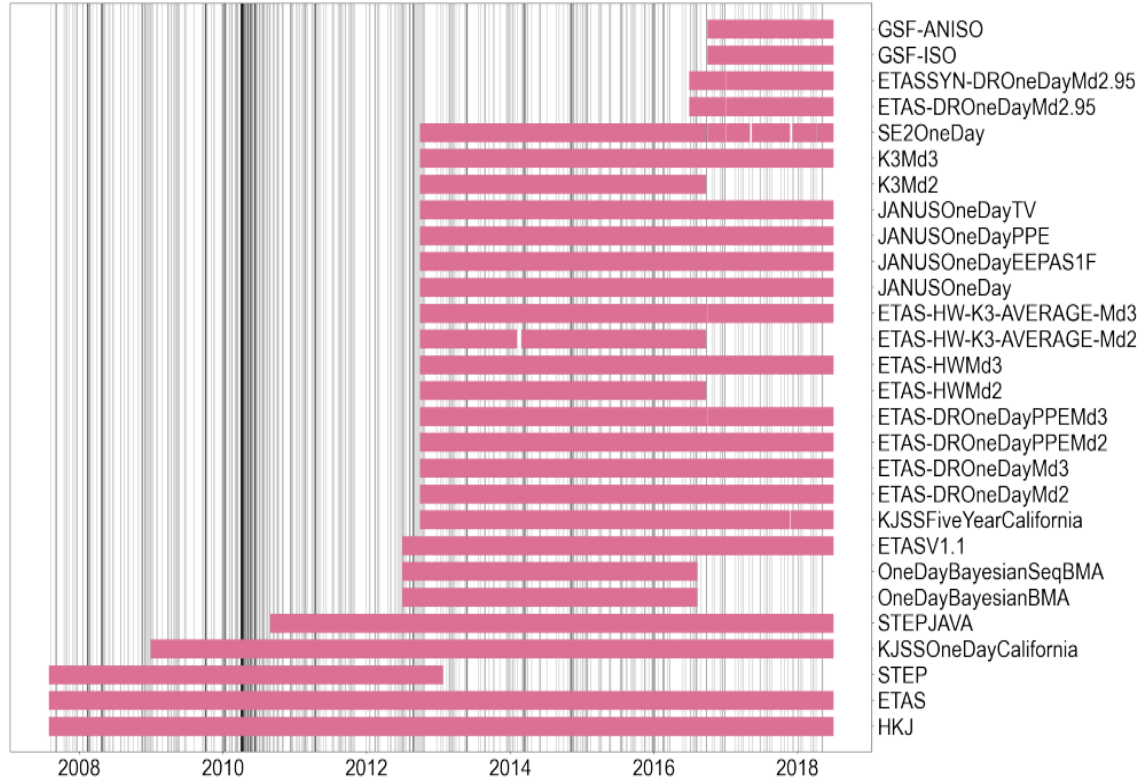
# NEXT-DAY CSEP FORECASTS: ESTABLISHING A BENCHMARK

Francesco Serafini, José Boyona, Fabio Silva,  
Maximilian Werner, Philip Maechling, Kevin  
Milner, William Savran



# Next-day CSEP forecasting models

- CSEP have collected and operated **27 models** producing daily forecasts for California
- The forecasts are between **August 1, 2007 and August 30, 2018**
- Each forecast starts at midnight and covers **24 hours**
- Only M3.95+ events



# Sharing the forecasts



- The forecasts are available as .hdf5 files on the CSEP website
- We aim to establish a **benchmark** to:
  - Have a common point of comparison for **new models**
  - Have a set of known models to **test new metrics**

List of Models

Model name	Starting date	End date	Missing days	Min magnitude	Links
ETAS	01 August 2007	30 August 2018	0	3.95	1. <a href="#">Description</a> 2. <a href="#">Download</a>
STEP	01 August 2007	21 January 2013	0	3.95	1. <a href="#">Description</a> 2. <a href="#">Download</a>
KJSSOneDay	01 January 2009	30 June 2018	0	3.95	1. <a href="#">Description</a> 2. <a href="#">Download</a>
KJSSFiveYears	01 October 2012	30 June 2018	15	4.95	1. <a href="#">Description</a> 2. <a href="#">Download</a>
GSF_ISO	01 October 2016	30 June 2018	1	3.95	1. <a href="#">Description</a> 2. <a href="#">Download</a>
GSF_ANISO	01 October 2016	30 June 2018	1	3.95	1. <a href="#">Description</a> 2. <a href="#">Download</a>

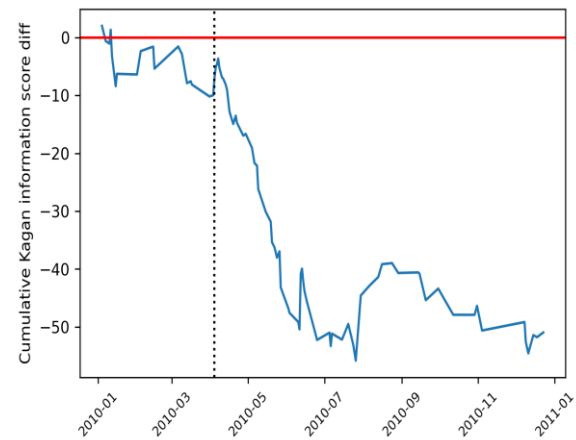
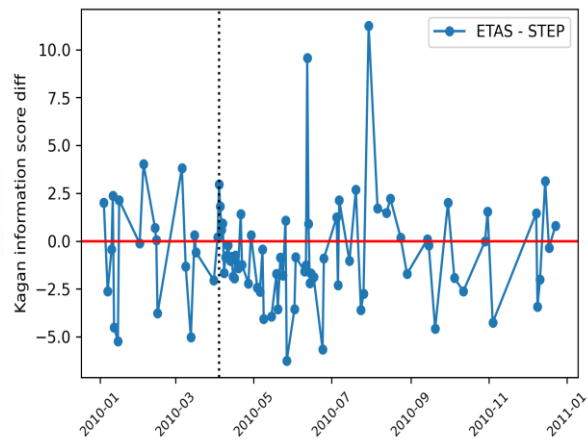
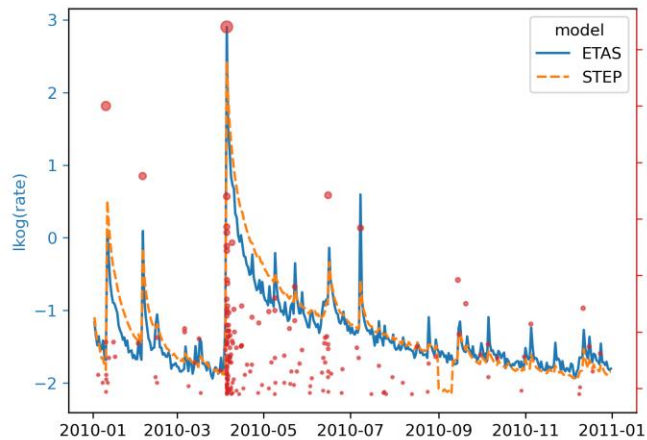
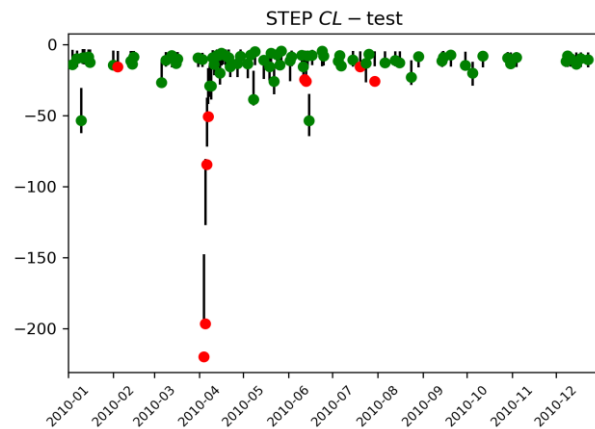
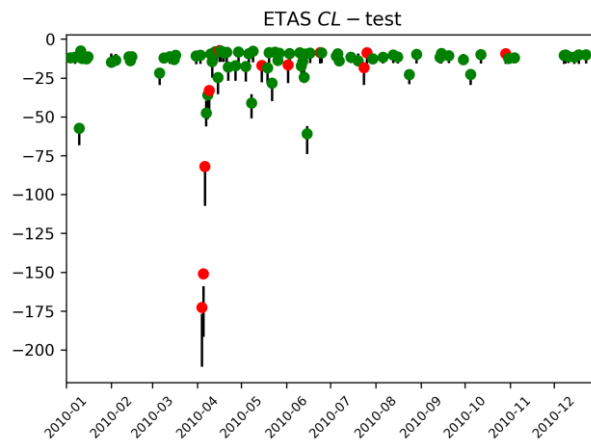
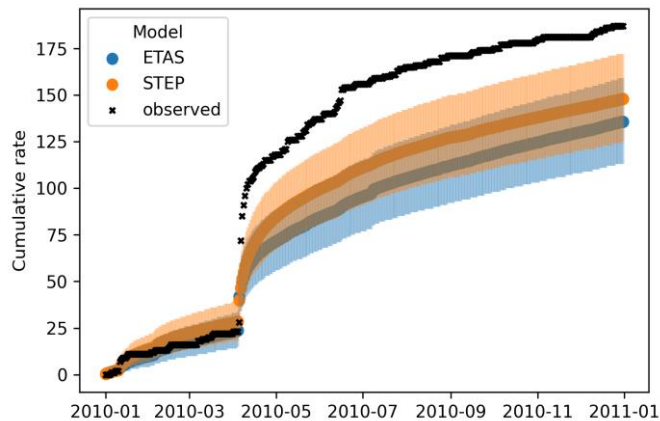
# Tutorial & Code

We are providing code to perform different operations and writing a tutorial to guide the user to:

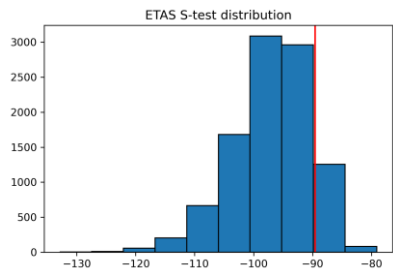
- Evaluate models on a daily basis (consistency and comparison)
- Analyse specific days of interest
- Build and analyse cumulative forecasts on custom time periods
- Comparison with UCERF3-ETAS and potentially any catalogue-based forecasts.

The tutorial focus on the ETAS and STEP model, and we aim to provide a workflow with which models can be evaluated.

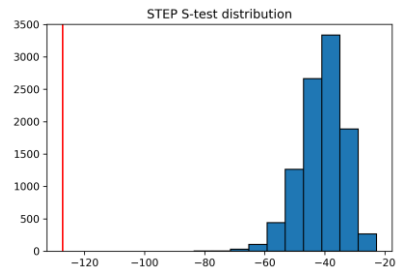
# Daily analysis - 2010



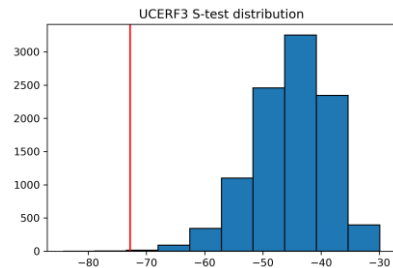
# Analyse Specific Days – 5 April 2010



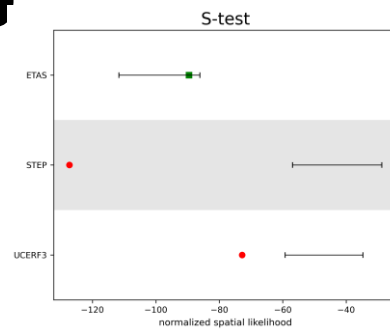
ETAS - 05/04/2010



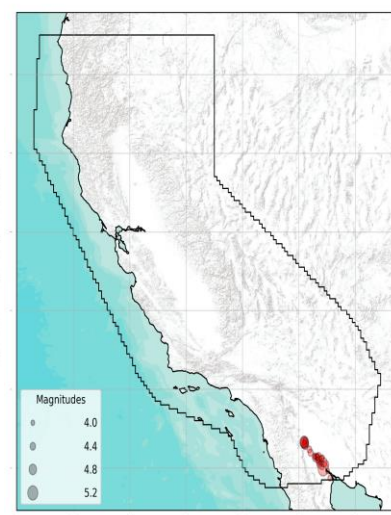
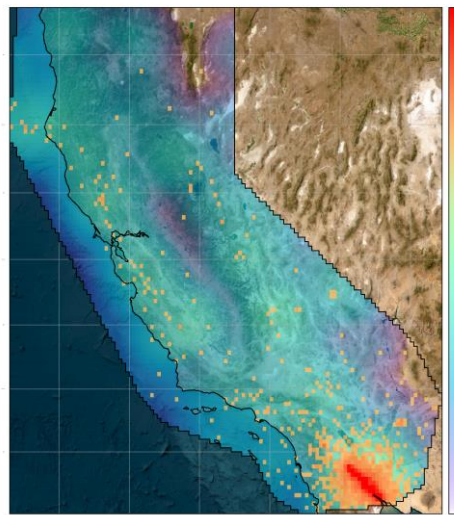
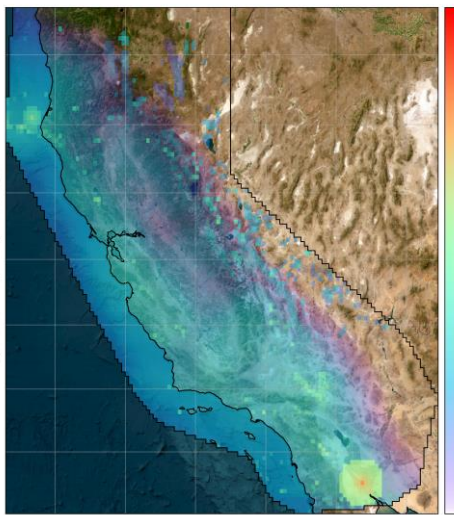
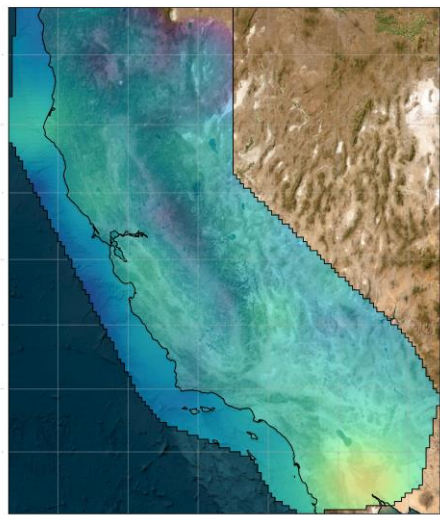
STEP - 05/04/2010



UCERF3 - 05/04/2010



ComCat - 05/04/2010





**THANK YOU**

Contacts: [Francesco.Serafini@bristol.com](mailto:Francesco.Serafini@bristol.com)

[bristol.ac.uk](http://bristol.ac.uk)

